



# Infant Health in Anne Arundel County

Anne Arundel County Department of Health

Office of Planning and Surveillance

May 2009

## Number of Births by Race of Mother

Year	Total	White	Black
2003	6,913	5,601	1,021
2004	6,767	5,400	1,054
2005	6,751	5,280	1,114
2006	7,102	5,529	1,169
2007	7,115	5,489	1,226

## Rate of Infant Mortality by Race of Mother\*

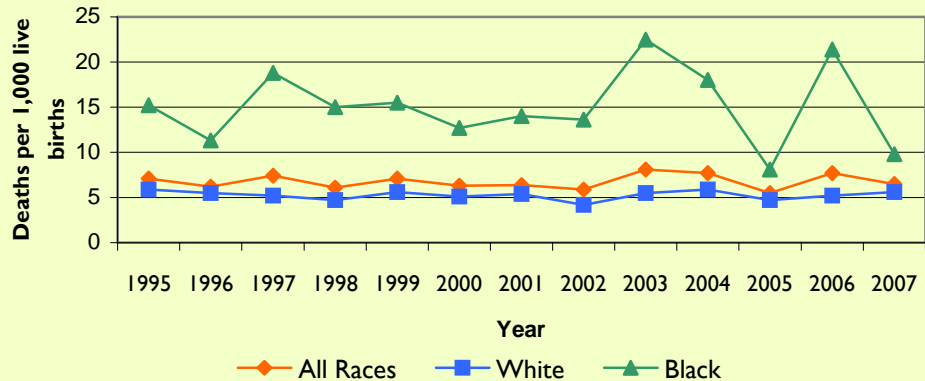
Year	Total	White	Black
2003	8.1	5.5	22.5
2004	7.7	5.9	18.0
2005	5.5	4.7	8.1
2006	7.7	5.2	21.4
2007	6.5	5.6	9.8

## Black Infant Mortality\*

Year	Anne Arundel	Maryland
2003	22.6	14.8
2004	18.0	14.9
2005	8.1	12.7
2006	21.4	12.7
2007	9.8	14.0

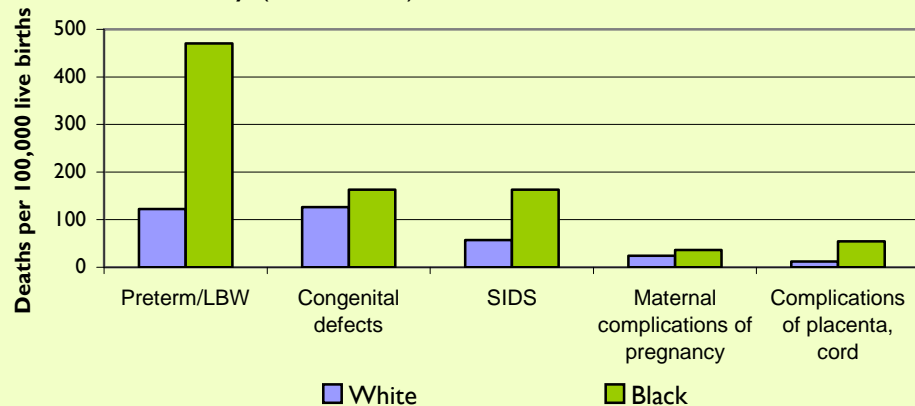
## Infant Mortality Rates

Anne Arundel County (1995-2007)



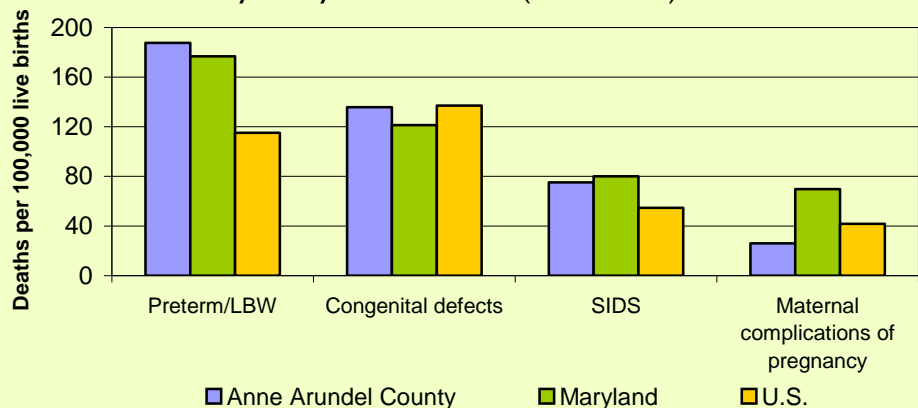
## Causes of Death by Race

Anne Arundel County (2003-2007)



## Causes of Death

Anne Arundel County, Maryland and U.S.† (2003-2007)



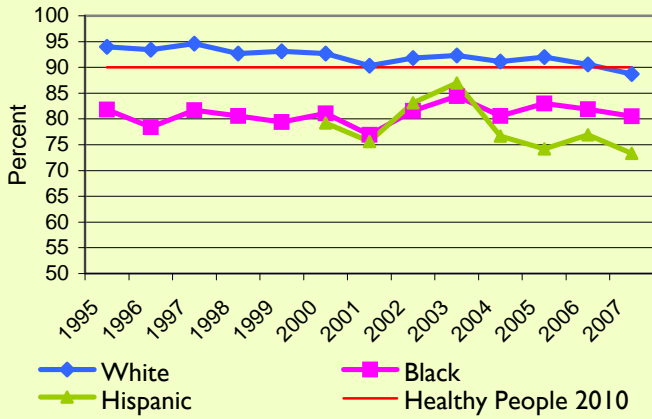
3 Harry S. Truman Parkway  
Annapolis, MD 21401  
[www.aahealth.org](http://www.aahealth.org)

Compiled by:  
Jinlene Chan, MD, MPH  
Johnia J. Curtis, MPH  
410-222-7280

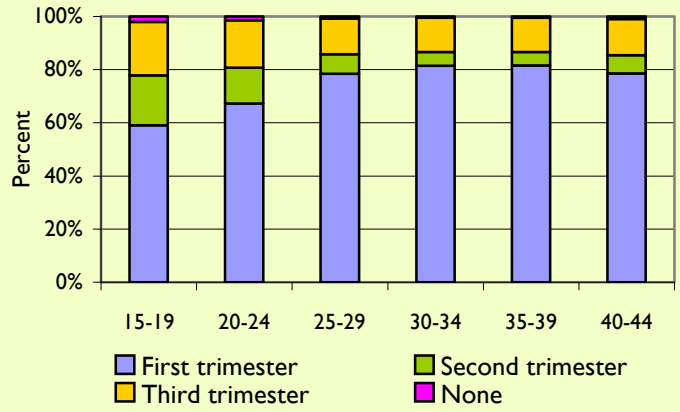
\*Deaths per 1,000 live births. †National Center for Health Statistics data. 2003-2006 data only.  
Data source is Maryland Department of Health and Mental Hygiene Vital Statistics Administration unless otherwise noted.  
LBW = Low Birth Weight. SIDS = Sudden Infant Death Syndrome.

## Selected Risk Factors for Infant Mortality

**Early Prenatal Care Initiation by Race/Ethnicity  
Anne Arundel County**



**Prenatal Care Initiation by Maternal Age Group  
Anne Arundel County (2003-2007)**

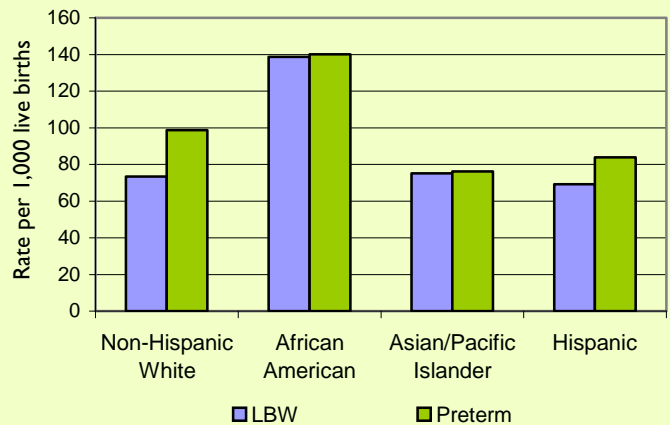


### PRETERM BIRTH and LOW BIRTH WEIGHT

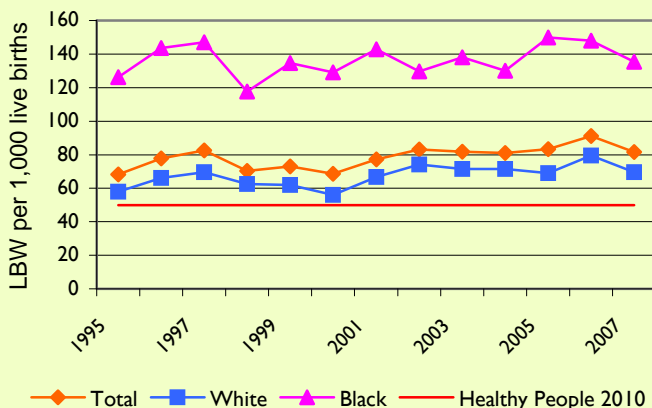
Preterm and low birth weight are the leading causes of death among babies in Anne Arundel County. Rates are higher in the County compared to Maryland and the United States. African American babies are at higher risk than all other races and ethnicities.

Source: Anne Arundel County Fetal and Infant Mortality Review Team

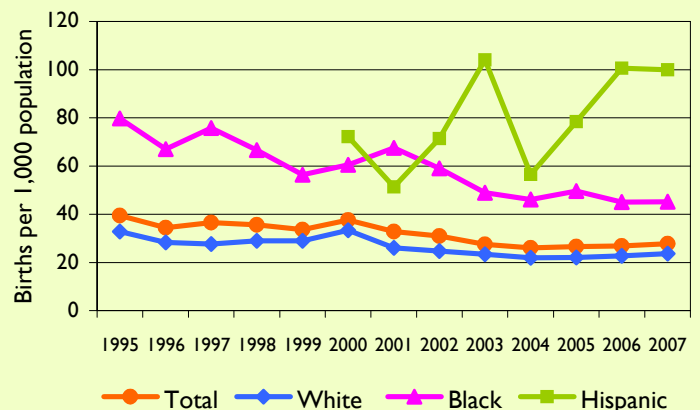
**Preterm and Low Birth Weight by Race/Ethnicity  
Anne Arundel County (2003-2007)**



**Trends in Low Birth Weight by Race  
Anne Arundel County**



**Trends in Teenage (15-19 Years) Birth Rates  
Anne Arundel County**



Note: Preterm babies are born at less than 37 weeks gestation. Low birth weight babies weigh 5.5 pounds or less at birth.